



Free Your Scanning PANDA free



Fast

18x16mm ultra-large scan field,
1-2 minute full-arch scanning,
up to 24 fps scanning speed.



Reliable

Precision within 5 μ m,
accuracy within 7 μ m,
restore the true intraoral appearance.



Effective

Lossless Transparent Transmission
Technology with 1 multi-functional
button, ensures 24/7 diagnostic
efficiency improvement.



Easy

178g ultra-light design, easy to
handle, 24h stand-by, adapts to
complex clinical scenarios.



► Cable-free

Clinical operations become effortless.

► 24h Standby

3.5 hours of continuous scanning.



► High Precision

Effectively balances scanning speed and precision.

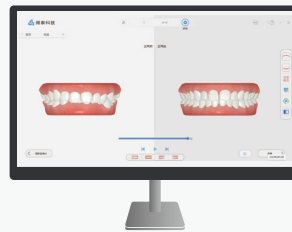
Light and Elegant ◀

Only **178g**, easy to handle.



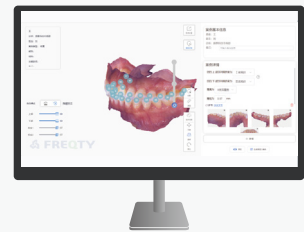
Panda Center

Panda Center integrates all apps in one place, provides efficient and intelligent workflow.



Panda OrthoSim

Combine A.I with Freqty unique algorithm, make the treatment easy.



AI Diagnosis

Freqty Cloud enables AI-powered 3D dental diagnostic reports, enhancing efficiency and quality of doctor-patient communication.

Category	PANDA free
Scan Principle	Dynamic Staring 3D Scanning
Total Size	241 x 30 x 28mm
Weight	178g
Number of Tips	6 tips (autoclavable)
Tips Size	83 x 19 x 14mm
Scan Field	18 x16mm
Depth of Field	0~20 mm
Output Files	STL, PLY, custom encrypted PTY format
Connection Method	Wireless, the base is connected with a USB 3.0 cable
Full Arch Scanning Time	<1 min
Accuracy	≤7 μm
Precision	≤5 μm
Light Source	White LED+Laser
Language	Supports Multi-language Switching
Continuous Scanning Time	3.5h
Multi-function Button	Yes
Motion Sensing	Yes

*The parameters are subject to change, the final interpretation is reserved by Freqty.